

delawaretrees.com

9th Annual



# DELAWARE ARBORIST & TREE CARE SEMINAR

OCTOBER • 22 & 23 • 2019  
DELAWARE STATE FAIRGROUNDS  
HARRINGTON, DELAWARE



Earn continuing  
education credits  
for certification  
in the tree care  
industry.





# DAY ONE

# October 22

**EXHIBIT HALL**  
**18500 S. DUPONT HWY.**  
**HARRINGTON, DE 19952**

**7:30 AM**      **REGISTRATION - EXHIBIT HALL**

**8:00 AM**      **WELCOME**

**SESSION 1 (Exhibit Hall)**

**8:15 AM**      **TRENT DICKS**

*ArborJet*

Update on EAB and Tree Pests

**9:15 AM**      **NANCY GREGORY**

*University of Delaware*

Signs and Symptoms: Identification of Urban Tree Diseases

**10:45 AM**      **BREAK**

Network and meet our exhibitors

**11:00 AM**      **WEI ZHANG**

*Tree Diaper*

Soil Moisture: One of the Most Important Factors for Tree Survival

**NOON**      **LUNCH**

Network and meet our exhibitors

**1:00 PM**      **WEI ZHANG**

*Tree Diaper*

Road Salt and Urban Forestry: Protecting Plants from Damage

**2:00 PM**      **TRENT DICKS**

*ArborJet*

Fall Fertilization and the New Tree-Age R-10

**3:00 PM**      **BREAK**

Network and meet our exhibitors

**3:15 PM**      **BILL SEYBOLD**

*Delaware Forest Service*

Delaware Big Trees Program

**4:00 PM**      **CLOSING**

Reminder: You must stay through closing to earn CEU credits

**SESSION 2**



**DAN STALEY**

*Arbor Drone*

Drones and Tree Risk Assessment

**DAN STALEY**

*Arbor Drone*

Outdoor Demonstration of Drones in Risk Assessment

**JOE MURRAY**

*Tree Literacy LLC*

Permaculture and Arboriculture

**2 Hours (1 to 3 PM)**



# October 23

## DAY TWO

8:00 AM

### WELCOME

All Sessions in Exhibit Hall

8:15 AM

### JASON GRABOSKY

*Rutgers University*

Compartmentalization in Trees

9:15 AM

### STEPHEN HILBERT

*Asplundh*

Evolution and Management of the Urban Forest and Electric Utilities

10:15 AM

### BREAK

Network and meet our exhibitors

10:30 AM

### JASON GRABOSKY

*Rutgers University*

Construction Zones/Sidewalks with Trees

11:30 AM

### CLOSING

Please fill out evaluation surveys and forms to receive continuing education credits.

### EXHIBIT HALL

18500 S. DUPONT HWY.  
HARRINGTON, DE 19952





# Speakers &

## PRESENTATIONS

### TRENT DICKS

*ArborJet - Eastern Technical Manager*

*With 20 years experience in the landscape industry, Dicks has a B.S. from Illinois State and an associate's in applied horticulture.*

#### Update on EAB and Other Insects

The latest on emerald ash borer (EAB) in Delaware, emerging threats from insects such as spotted lanternfly, and a range of possible treatments. **Day 1, 8:15 AM - Exhibit Hall**

#### Fall Fertilization and Tree-Age R-10

Learn about the benefits of fall fertilization and advances in site applications for Tree-Age, R-10. **Day 1, 2:00 PM - Exhibit Hall**

### NANCY FISHER GREGORY

*University of Delaware - Extension Agent*

*Gregory has an M.S. in plant pathology from Penn State University and serves as the plant diagnostician at U.D. Cooperative Extension.*

#### Signs and Symptoms: Identification of Urban Tree Diseases

Learn to identify a broad range of tree pests, pathogens, and problems in today's urban forests. **Day 1, 9:15 AM - Exhibit Hall**

### DAN STALEY

*Arbor Drone*

*Dan Staley is a certified arborist with Colorado's Arbor Drone, which has worked with cities in the U.S. and Canada to use drones to find EAB and assess risk from hazardous trees.*

#### Drones and Tree Risk Assessment plus Outdoor Demonstration of Drones

Drones are an important new tool to survey for insect damage and identify hazard trees.

**Day 1, 9:15 AM - Exhibit Hall Boardroom**  
**Day 1, 11:00 AM - Outdoors**



ArborJet's Trent Dicks prepares an ash tree injection in Newark to prevent future EAB damage.



UD's Nancy Gregory is among Delaware's top experts on plant and tree diseases.



Arbor Drone's Dan Staley has pioneered the use of multispectral aerial images to find tree damage and assess risk.



# Speakers & PRESENTATIONS



Dr. Wei Zhang helped develop the Tree Diaper® to ensure greater tree survival in harsh urban environments.

## WEI ZHANG

*Zynnovation LLC - Tree Diaper®*

Zhang holds a PhD in chemical engineering and is one of the co-founders of Zynnovation LLC, a Virginia firm that developed the Tree Diaper®, winner of a recent "2019 Cool Products Award."

### Soil Moisture: One of the Most Important Factors for Tree Survival

Learn the relationship between soil, moisture and tree survival.

Day 1, 11:00 AM - Exhibit Hall

### Road Salt and Urban Forestry

Wide use of road salt in northern cities can cause tree discoloration and canopy loss. Learn how to mitigate and prevent the effects through case studies from Baltimore and Richmond.

Day 1, 1:00 PM - Exhibit Hall



Joe Murray is a tree expert with a focus on regenerative landscaping and the importance of soil health.

## JOE MURRAY

*Tree Literacy LLC*

Murray has a bachelor's degree in biology, a master's in plant pathology and physiology from Virginia Tech, and a master's in teaching from the University of Richmond.

### Permaculture and Arboriculture

Understanding basic permaculture practices can help arborists assess if they are being conducted properly and if they benefit trees.

Day 1, 1:00 PM - Exhibit Hall Boardroom (2 hours)



Bill Seybold is the Delaware Forest Service's forest health specialist who oversees its "Big Trees" Program.

## BILL SEYBOLD

*Delaware Forest Service*

Seybold has a bachelor's from the University of Wisconsin and a master's from the University of Minnesota. He oversees Delaware's forest health program and its "Big Trees of Delaware" list.

### Big Trees of Delaware, 5th Edition

Learn about how foresters measure large trees and what factors help make a tree a "champion."

Day 1, 3:15 PM - Exhibit Hall



# Speakers &

## PRESENTATIONS

### JASON GRABOSKY

*Rutgers University - Professor of Urban Forestry*

Grabosky holds a bachelor's degree from Cal-Poly and both master's and Ph.D. degrees from Cornell in ornamental horticulture. He received the L.C. Chadwick Award from ISA in 2012 for his contributions to soil design research and also was honored with Rutgers University's Teaching Excellence Award in 2017.

#### Compartmentalization in Trees

Learn about the process of compartmentalization in trees and how it influences their overall health from a top urban forestry expert.

**Day 2, 8:15 AM - Exhibit Hall**

#### Construction Zones/Sidewalks with Trees

Conflicts between tree roots, sidewalks, and other construction can pose challenges to cities and incur major costs over time. Learn why landscape planning should take into account a host of factors such as tree species, growth rates, tree age, and structural soil availability on site.

**Day 2, 10:30 AM - Exhibit Hall**

### STEPHEN HILBERT

*Asplundh - Manager of Technical Services*

Hilbert is an ISA-certified arborist who has a B.S. in forest management from Penn State University. He has extensive industry experience working as an arborist for Bartlett Tree Experts and First Energy.

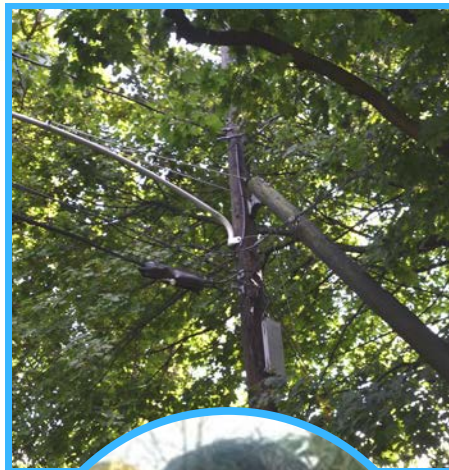
#### Evolution and Management of the Urban Forest and Electric Utilities

Learn from an industry arborist about the evolution of the urban forest alongside modern utility infrastructure that powers today's information society.

**Day 2, 9:15 AM - Exhibit Hall**



Jason Grabosky of Rutgers University has focused his academic work on soil design and tree health in urban areas.



Stephen Hilbert of Asplundh is an expert on utility arboriculture and urban forest management.



**THANKS TO OUR**

*Sponsors*

*American Arborist*

*Iron Source*

*Brush Bandit*

*Bakers Power and Turf*

*Tree Diaper*

*Vermeer Mid Atlantic*

*ArborJet*

*Atelier O'Ryan Tree  
Buttress Support Systems*

*Brush*



**Bandit**  
INDUSTRIES, INC.



# Notes